



The makers of MrSID bring you GeoViewer, the fastest way to view MrSID imagery—and just about everything else. Display raster imagery, LiDAR point clouds, and vector overlays in one standalone application. Connect to online basemaps, combine local data with WMS and JPIP sources, export imagery, save projects, and enjoy advanced display options like dynamic range adjustment. Like what you see? Upgrade to GeoViewer Pro at any time for more enterprise GIS functionality without the enterprise price tag, including support for printing, additional projection systems, and advanced area measurement tools.

## GeoViewer Benefits

### Free. Fast. Simple.

#### Free GIS Viewer

GeoViewer is a free GIS viewer that doesn't skimp on features. Display raster, vector, LiDAR, WMS, and JPIP layers from one powerful viewer. GeoViewer has extensive support for industry file formats, including the industry standard MrSID format and the ISO standard JPEG 2000 format. Once you open your images in GeoViewer, you can tweak display settings for each layer to ensure that each image displays exactly the way that you want it to. Select image bands for multispectral images, adjust dynamic range settings for 16-bit images, and much more. As a bonus, you can view your imagery on a built-in OpenStreetMap base layer for context.

#### Access Pro Features

Upgrade to GeoViewer Pro to access advanced functionality. Print the layers that you open in GeoViewer, including vector

layers and rasterized versions of LiDAR data. Draw directly on the map to measure a specific area and search for locations using addressing information. Additionally, you can change the map's projection to more supported projections. By default, you can only view a layer in the native projection of the layer, in WGS 84 or in Web Mercator.

#### Explore LiDAR Point Clouds

GeoViewer is one of the only free GIS viewers for LiDAR point clouds. Explore LAS, LAZ, and MrSID Generation 4 (MG4) point clouds in 3-D mode or view a rasterized version of your data in 2-D mode. Customize your LiDAR experience by selecting from a long list of color gradients. GeoViewer also simplifies the process of visualizing elevation changes with an option for exaggerating elevation values, or Z values.

## GeoViewer Benefits Continued

### Connect to WMS and JPIP

GeoViewer's support for WMS and JPIP servers means that you can access your data from wherever you are. When you connect to a WMS server, you can browse image catalogs from a simple interface and display them on the same map. Likewise, if you connect to the JPIP component of an Express Server, you can easily browse your JPIP layers. For other JPIP servers, you can enter the URL of the images that you want to view or select from a list of frequently accessed images.

### Export and Print Your Imagery

Export the imagery that you display in GeoViewer. You can select custom areas to export, export the whole map, or export exactly what you see on the map. Additionally, if you purchase GeoViewer Pro, you can tile the images that you export and print your images. GeoViewer's intuitive print interface lets you print images at full resolution or fit the images to a single page. Alternatively, you can enter the number of pages that you want and GeoViewer automatically scales your images for the best fit.

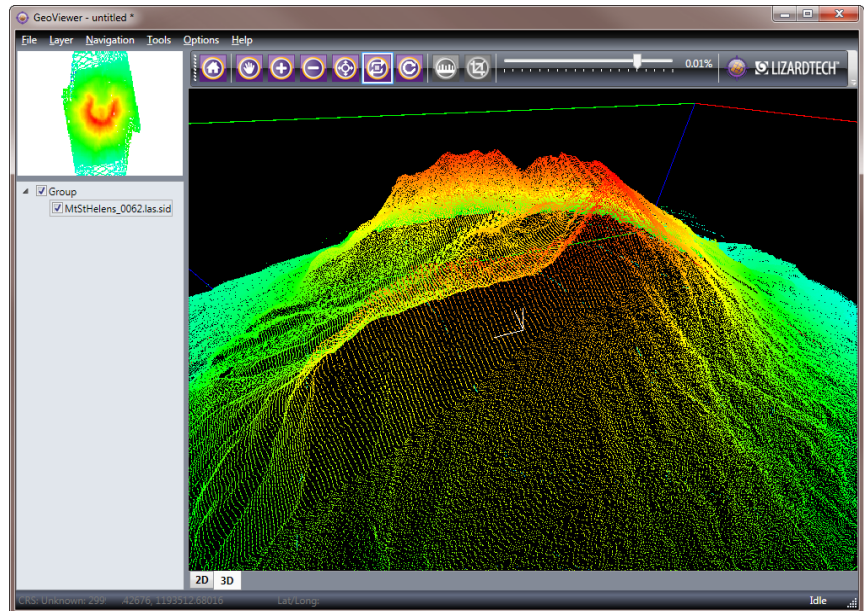
### Try the Mobile App

Want to view your imagery on the go? Try the GeoViewer app for Android and iOS. Display MrSID and JPEG 2000 imagery, measure distances, view geographic coordinates, and more.

### Free Download

GeoViewer is the GIS viewer that you've always wanted. Why not give it a spin? Download GeoViewer today:

<http://www.lizardtech.com/products/geoviewer/>



*View everything from raster and vector layers to 3-D point clouds.*

## System Requirements

### Operating System Requirements

You can install GeoViewer on 32-bit and 64-bit versions of the following operating systems:

- Windows 8
- Windows Server 2012
- Windows 7

### Hardware Requirements

For optimal performance, verify that your system meets the following recommended hardware requirements:

- 2.5 GHz processor
- 4 GB RAM
- 200 MB of disk space for installation and additional space for images

### Software Requirements

GeoViewer requires the following software to run:

- Microsoft .NET Framework 4.5
- Microsoft DirectX 9
- Visual Studio C++ 2013 Redistributable

If this software is not installed on your machine, the GeoViewer installer downloads and installs the software for you.